

设备优势

Advantages



不同方式对比表 Highlights

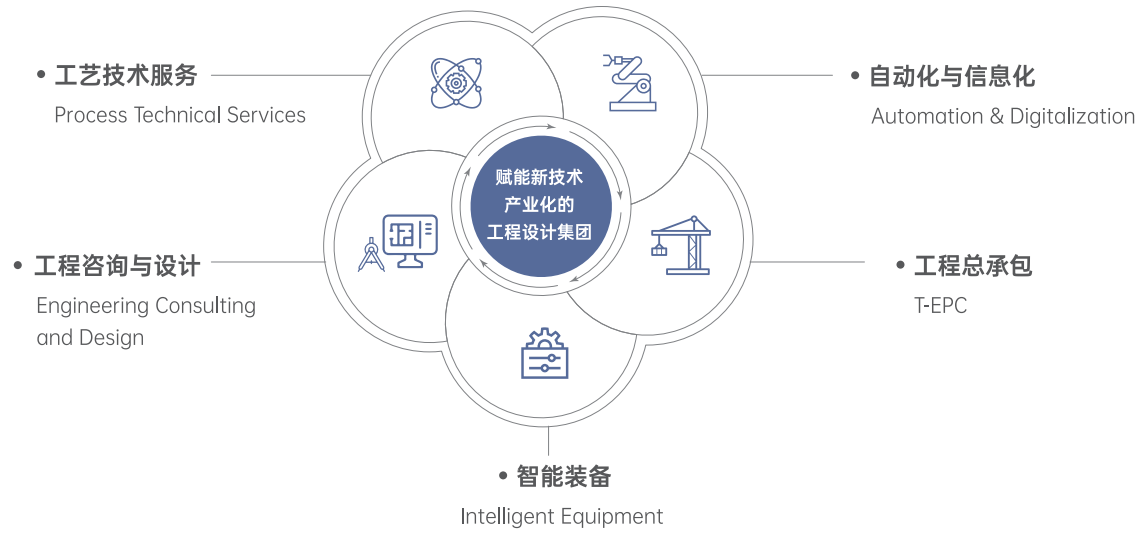
方式Methods	传统人工刷洗Manual	高压水清洗High Pressure Water Cleaning	智能自动清洗机Intelligent Automatic Cleaner
指标Indicators			
清洗时间Time	30-60mins	30mins	20mins
清洗效果Effect	一般General	较好Better	优秀Excellent
劳动强度Labour Intensity	高High		低Low
人工配置Manual Configuration	至少2人At least 2 persons		1人1 person
工作环境Working Environment	恶劣(高温、高湿、有毒害)Worse(High temperature, high humidity, toxic)		好Good
安全隐患Safety	不能保证下罐人员安全Safety can't be guarantee		无安全隐患Safe
稳定性Stability	操作手法不同, 一致性差Different operation methods lead to poor consistency		稳定Stable
可追溯性Traceability	无记录, 不可追溯No Records, Not Traceable		数字化, 可追溯Digital and traceable

天俱时集团

TIANS Group

天俱时始创于1998年, 是一家赋能新技术产业化的工程设计集团, 依托先进的设计理念和前瞻性的国际视野, 为全球客户提供工艺技术服务、工程咨询与设计、工程总承包、智能装备、自动化与信息化于一体的综合解决方案, 帮助客户实现 From Lab to Fab 的产业化转化。业务涵盖精细化工、电子化学品、合成生物、生物医药、化学制药、食品健康、冶金矿山等高科技行业领域。

TIANS Engineering Technology Group Co., Ltd., founded in 1998, is an engineering design group empowering industrialization of new technologies. Based on advanced design concept and forward-looking global perspective, we provide comprehensive solutions involving process technical services, engineering consulting and design, EPC, intelligent equipment and automation & digitalization to help our clients achieving a From Lab to Fab industrialization transformation. Our business spans many high-tech fields, including fine chemical engineering, electronic chemicals, synthetic biology, bio-pharmaceutical, chemical pharmaceutical, healthy food and metallurgy & mining.



天俱时工程科技集团有限公司

中国·河北·石家庄市裕华东路530号天山科技工业园A座23-26层

400-082-6116

TIANS ENGINEERING TECHNOLOGY GROUP CO., LTD

F23-26, BUILDING A, TIANSHAN SCIENCE AND TECHNOLOGY INDUSTRIAL PARK, NO. 530, YUHUA EAST ROAD, SHIJIAZHUANG, HEBEI, CHINA



IDENTIFY QR CODE TO SEE TIANS WECHAT ACCOUNT
天俱时公众号

TJS-2405-CE500-20240220

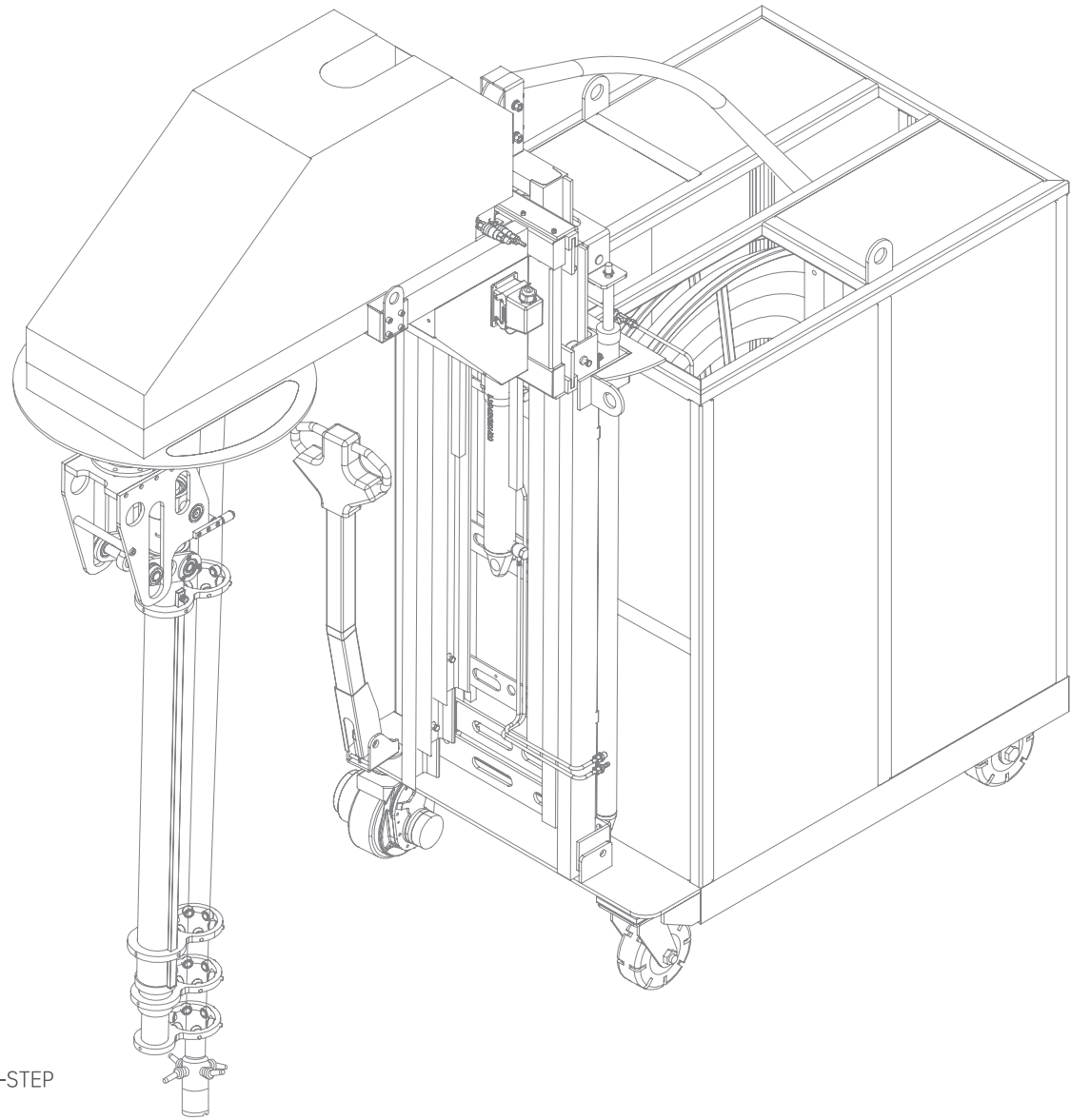


IDENTIFY QR CODE ,VIEW ELECTRONIC BROCHURE
识别二维码,查看电子宣传册

TIAN'S 天俱时

Intelligent Automatic Cleaner

智能自动清洗机



清洗 一步到位

CLEAN IN A SNAP WITH ONE-STEP

智能自动清洗机

Intelligent Automatic Cleaner

智能自动清洗机是一种用于发酵罐、反应釜内360°全方位无死角的高压自动清洗装置。智能自动清洗机自动运行, 清洗效率高, 安全可靠, 改善了工人劳动环境, 避免了工人下罐清洗存在的诸多安全隐患, 降低了人工成本, 解决了清洗时间长等问题。广泛应用于生物医药、生物材料、医美、新能源、天然健康产物等行业的各种反应罐。

An intelligent automatic cleaner is a high-pressure automatic cleaning equipment that can be used for cleaning inside fermenters and reactors. The sprayer can rotate 360-degree full-angle and has no-dead-corner. The intelligent automatic cleaner runs automatically, with high cleaning efficiency and safety and reliability, which improves the working environment for workers, avoids many safety hazards of manual tank cleaning, reduces labor costs, and solves problems such as long cleaning times. It is widely used in various reactors vessels in the industries of biomedicine, biomaterials, medical aesthetics, new energy, natural health products, and more.

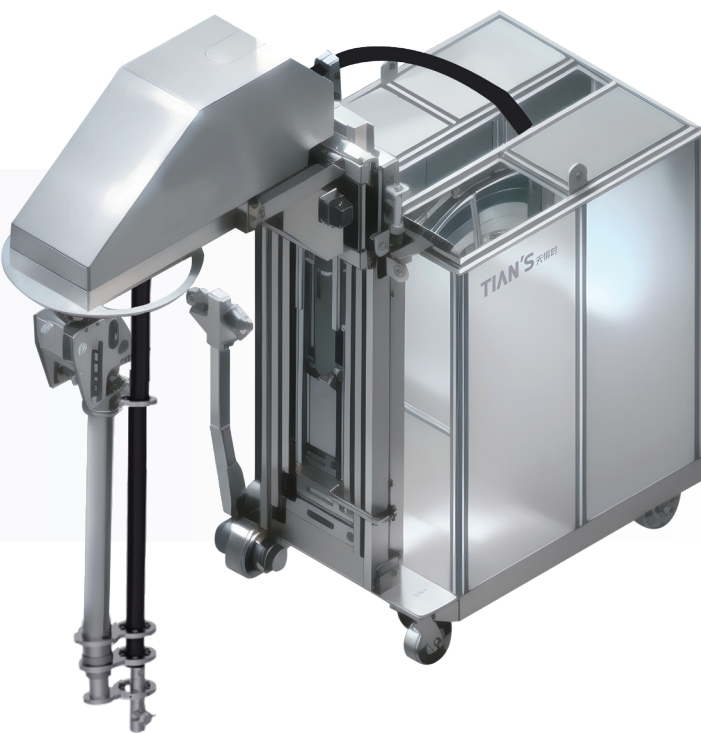
Intelligent Automatic Cleaner



反应釜智能自动清洗机
Intelligent Automatic Reactor Cleaner



发酵罐智能自动清洗机
Intelligent Automatic Fermenter Cleaner



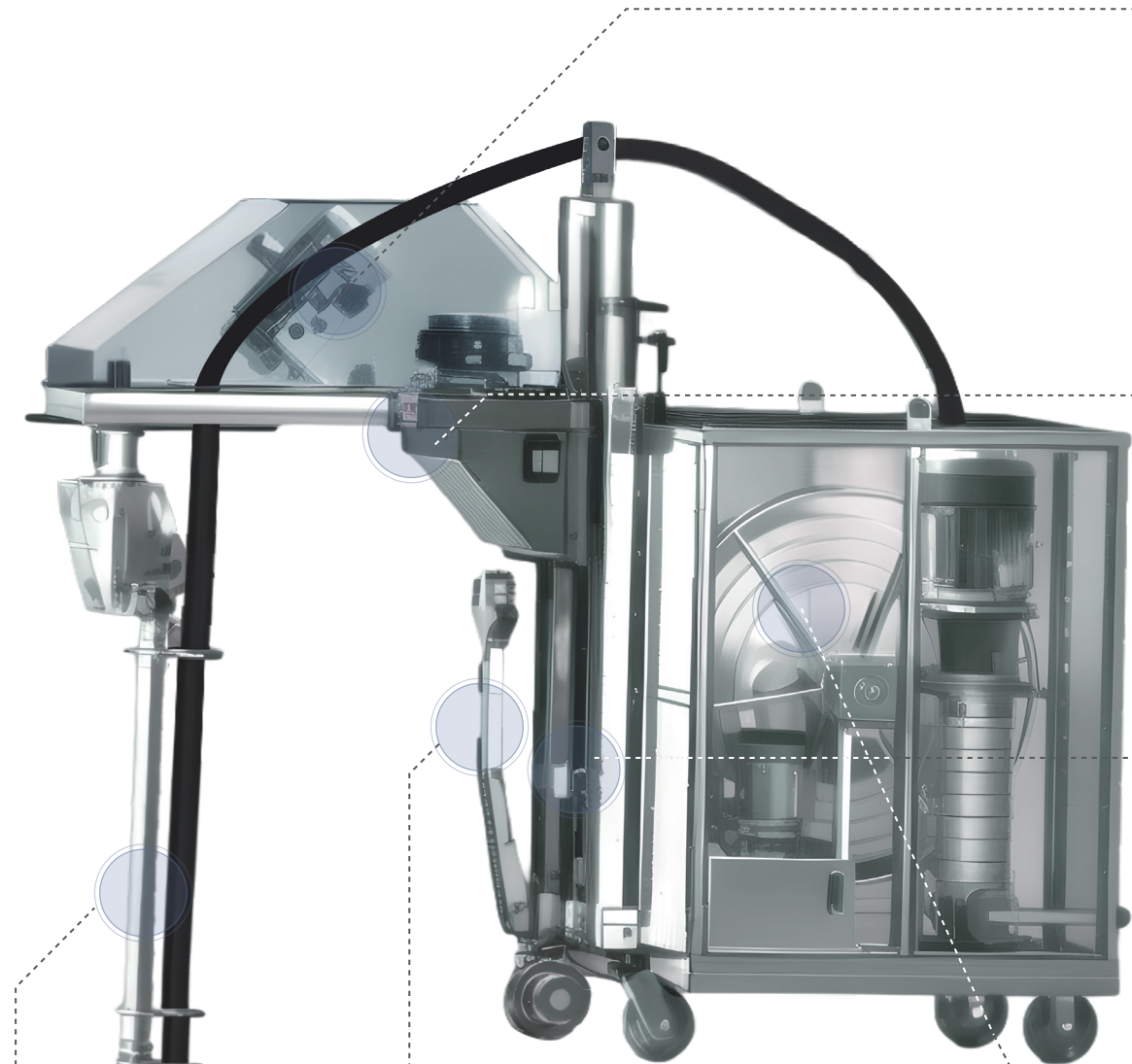
产品规格 / Product Specifications

两种型号可选 2 Different Models	01 反应釜清洗机标准款 Reactor Cleaner Standard Model	02 反应釜清洗机防爆款 Reactor Cleaner Explosion-Proof Model
规格型号 Models	TJS-RC-I	TJS-RC-II
清洗罐最大直径(mm) Maximum Diameter	2400	2400
清洗罐最大高度(mm) Maximum Height	6000	6000
清洗液流量 (m³/h) Cleaning Fluid Flow	1—4	1—4
操作方式 Operation Mode	手操器遥控操作 Operation by manual controller	按钮+PLC操作 (可用于防爆区域) Button+PLC Operation (Can be used in anti-explosion areas)
主机外形尺寸Size (D*W*H mm)	1220*1000*1600	1220*1000*1600
装机容量 (kw) Capacity	4.5-6	4.5-6
喷头清洁有效直径 (m) Effective Diameter	4	4

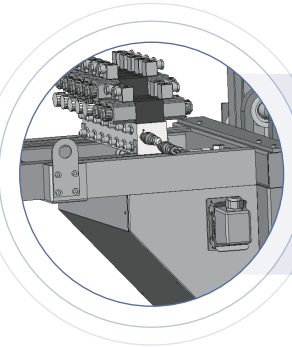
产品规格 / Product Specifications

三种型号可选 3 Different Models	01 发酵罐清洗机标准款 Fermenter Cleaner Standard Model	02 发酵罐清洗机自动款 Fermenter Cleaner Auto Model	03 发酵罐清洗机智能款 Fermenter Cleaner Smart Model
规格型号 Models	TJS-FC-I	TJS-FC-II	TJS-FC-III
清洗罐最大直径(mm) Maximum Diameter	8000	8000	8000
清洗罐最大高度(mm) Maximum Height	20000	20000	20000
清洗液流量 (m³/h) Cleaning Fluid Flow	6—10	6—10	6—10
操作方式 Operation Mode	手操器遥控操作 Operation by manual controller	手操器遥控操作 Operation by manual controller	智能检测清洗效果 Intelligent detection of cleaning effect
		plc执行轨迹操作 Operation by plc	手操器遥控操作 Operation by manual controller
人孔直径 (mm) Manhole Diameter	>500	>500	>500
人孔高度 (mm) Manhole Height	800-1600	800-1600	800-1600
主机外形尺寸Size (D*W*H mm)	1400*1200*2400	1400*1200*2400	1400*1200*2400
装机容量 (kw) Capacity	7.5-11.75	7.5-11.75	7.5-11.75
喷头清洁有效直径 (m) Effective Diameter	8—25	8—25	8—25

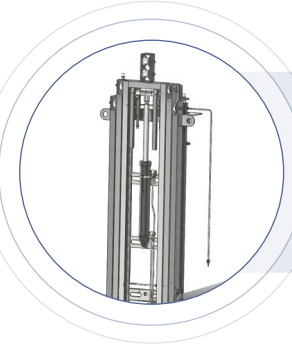
设备特点
Charactor



液压伺服送管系统, 运行更平稳可靠。
Hydraulic servo pipe feeding system for more stable and reliable operation.



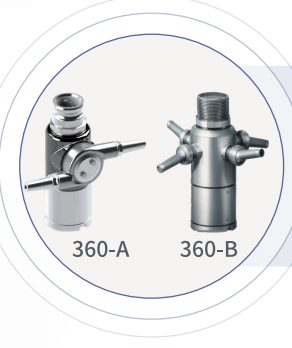
前臂4向调整, 定位准确快捷。
Forearm 4-way adjustment for accurate and fast positioning.



三级提升门架, 高度体积更小, 安全稳定, 方便转运。
Three-stage lifting gantry, smaller in height and volume, safe and stable, convenient for transportation.



自适应衡拉力盘管设计, 安全、快捷、平稳、可靠。
Adaptive constant tension coil design, safe, fast, stable, and reliable.



360°旋转喷头, 确保容器内每个部位都能被彻底清洗。
360 ° rotating nozzle ensures that every part of the container can be thoroughly cleaned.



电驱前轮设计, 设备运行更加灵活、便捷。
Electric drive front wheel design makes equipment operation more flexible and convenient.



多级笔式自动伸缩机构, 适应不同罐直径。
Multistage pen type automatic telescopic mechanism, suitable for different tank diameters.